

EXHIBITION PLACE, BOWEN HILLS

WHAT: PROJECT UPDATE 19 - COMMUNITY CONSTRUCTION INFORMATION

WHEN: ISSUED **October 2024**

WHERE: BRISBANE SHOWGROUNDS PRECINCT

To our valued community,

Works underway

Construction of Exhibition Place is progressing well. We are continuing to complete large scale concrete works, so please be aware there are a number of concrete trucks moving to and from site daily.

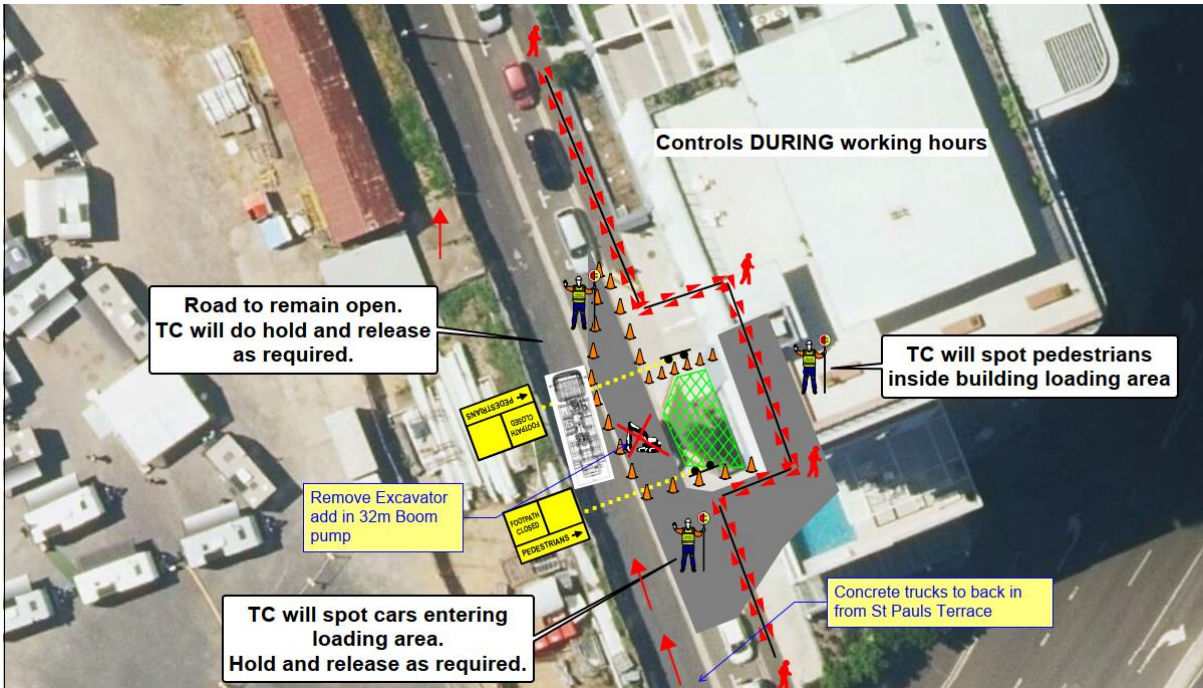
Upcoming works

The following concrete pours are planned for October. These dates are subject to the weather and may be delayed. We continue to utilise traffic management to manage the traffic interface with the concrete trucks.

<u>Date</u>	<u>Activities</u>	<u>Impact</u>
12/10/2024	Concrete Pour from Alexandria Street Level 15 Pour 2	Stop and go traffic controls on Alexandria Street and King's Lane
17/10/2024	Concrete Pour from Alexandria Street Level 16 Pour 1	Stop and go traffic controls on Alexandria Street and King's Lane
22/10/2024	Concrete Pour from Alexandria Street Level 16 Pour 2	Stop and go traffic controls on Alexandria Street and King's Lane
28/10/2024	Concrete Pour from Alexandria Street Level 17 Pour 1	Stop and go traffic controls on Alexandria Street and King's Lane

11/10/2024	FS03 Walls - pour from Exhibition Street	Stop and Go traffic controls and Exhibition Street
------------	--	--

Please note on Friday 11th October, concrete pours will take place from Exhibition Street. These activities, will include traffic management on Exhibition Street throughout the day, see below for more information.



General information

All works will continue to be completed during business hours from Monday to Saturday between 6.30am and 6.30pm. Alexandria St and Exhibition Street are returned to normal operation when no works are occurring.

Construction workers and administration staff can arrive onsite prior to 6.30am and are authorised to conduct to prepare for the day, conducting administrative duties only. We will manage and mitigate the construction noise from these works as much as possible to limit the impact to the area.

We will continue to minimise any inconvenience where possible and we thank you for your patience while we deliver this exciting new project at the Brisbane Showgrounds.

For more information

If you have any further questions about the development or the broader precinct, please do not hesitate to contact Shannon Volp, Stakeholder and Community Engagement Manager, Lendlease Development or visit www.kingstreetbrisbane.com/exhibition-quarter-bowen-hills/

For any site specific or operational questions, please contact to Tim Ferguson, Construction Manager, Hutchinson Builders.

Yours sincerely,

Shannon Volp
Stakeholder and Community Engagement Manager
Lendlease Development
0438 468 536
Shannon.volp@lendlease.com

Tim Ferguson
Construction Manager
Hutchinson Builders
0419 762 437
Timothy.Ferguson@hutchinsonbuilders.com.au